



ON CLOUD **NINE**

Every day is pure happiness!





*Creating Perfection.*

At Eden City, we build to make life comfortable with unique, thoughtful designs and very luxurious amenities your heart, desires.

15 Years in the business in building has widened our horizons to create develop and fulfill more projects aimed at uplifting the lives of people with the best housing apartment solutions at cost effective and affordable prices.

- The best living environment is our focus and pledge.
- Every comfort for leisure and pleasure is what we offer with pride.
- Choose from a beautiful, scenic, ocean view or the hustle and bustle of the modern day, city view.
- Your choice is unique.



**Take your living lifestyle to the next level.**

Our first project in housing and apartments named On Cloud Nine is located in the heart of Wellawatte, Colombo 06, only 50 meters away both from the main Galle Road and the beautiful ocean.

On Cloud Nine offers every resident the ultimate living style, whether it's a plunge in the cold waters of the cutting edge designed sky pool and hi-tech well equipped gymnasium with a refreshing hi-rise view.

A special four level ramped car park for the greater convenience of all housing units and two high speed industrial standard elevators with a back- up generator that powers all common areas.



**ON CLOUD NINE**

9, Boswell Place,  
Colombo 06, Sri Lanka.





**EVERY DAY IS PURE HAPPINESS!**

- 60 Units • 4 Level Car Parks • 12 Residential Floors
- Roof Top • Swimming Pool • Gym • Terrace

Ocean & City Views



## UNIT D

830 Sq.Ft



## UNIT E

950 Sq.Ft



## UNIT A

1,375 Sq.Ft





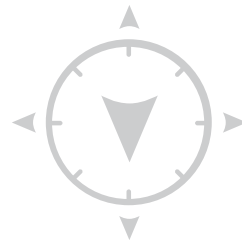
## ON CLOUD NINE

9, Boswell Place,  
Colombo 06, Sri Lanka.

Ocean & City Views

## TYPICAL FLOOR

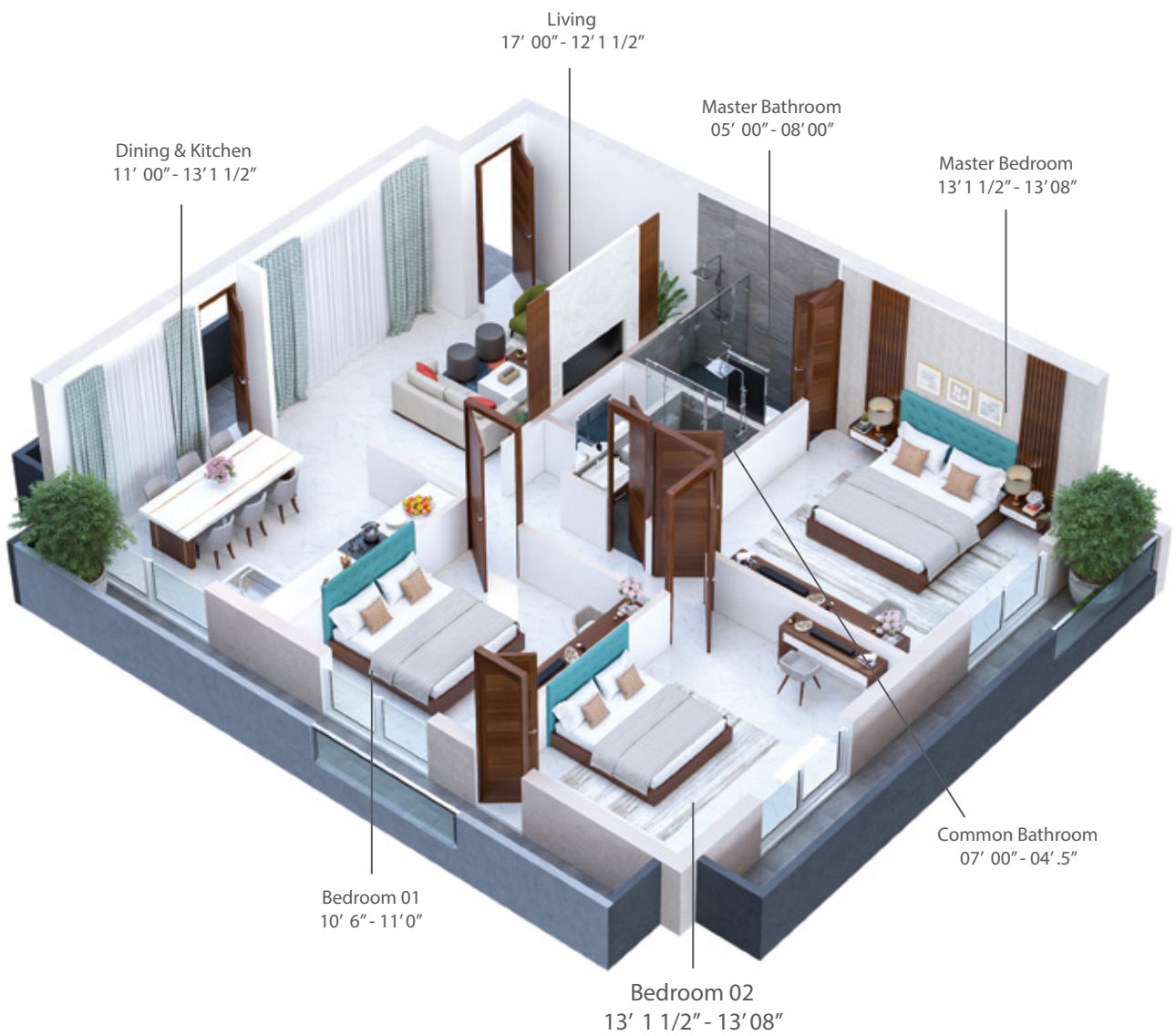
3D VIEW



**UNIT C**  
1,250 Sq.Ft



**UNIT B**  
1,700 Sq.Ft

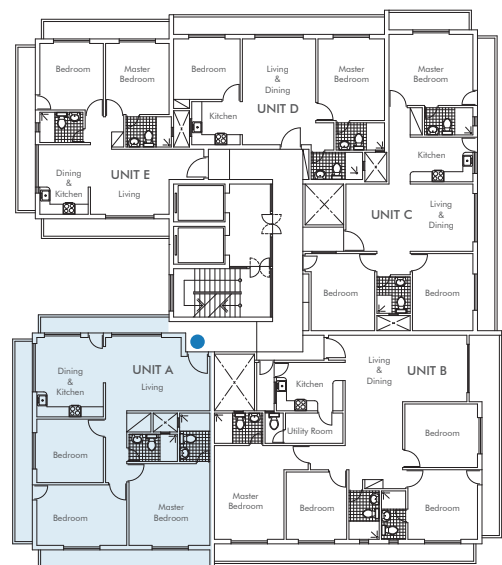
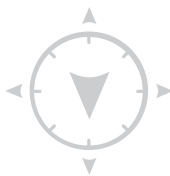


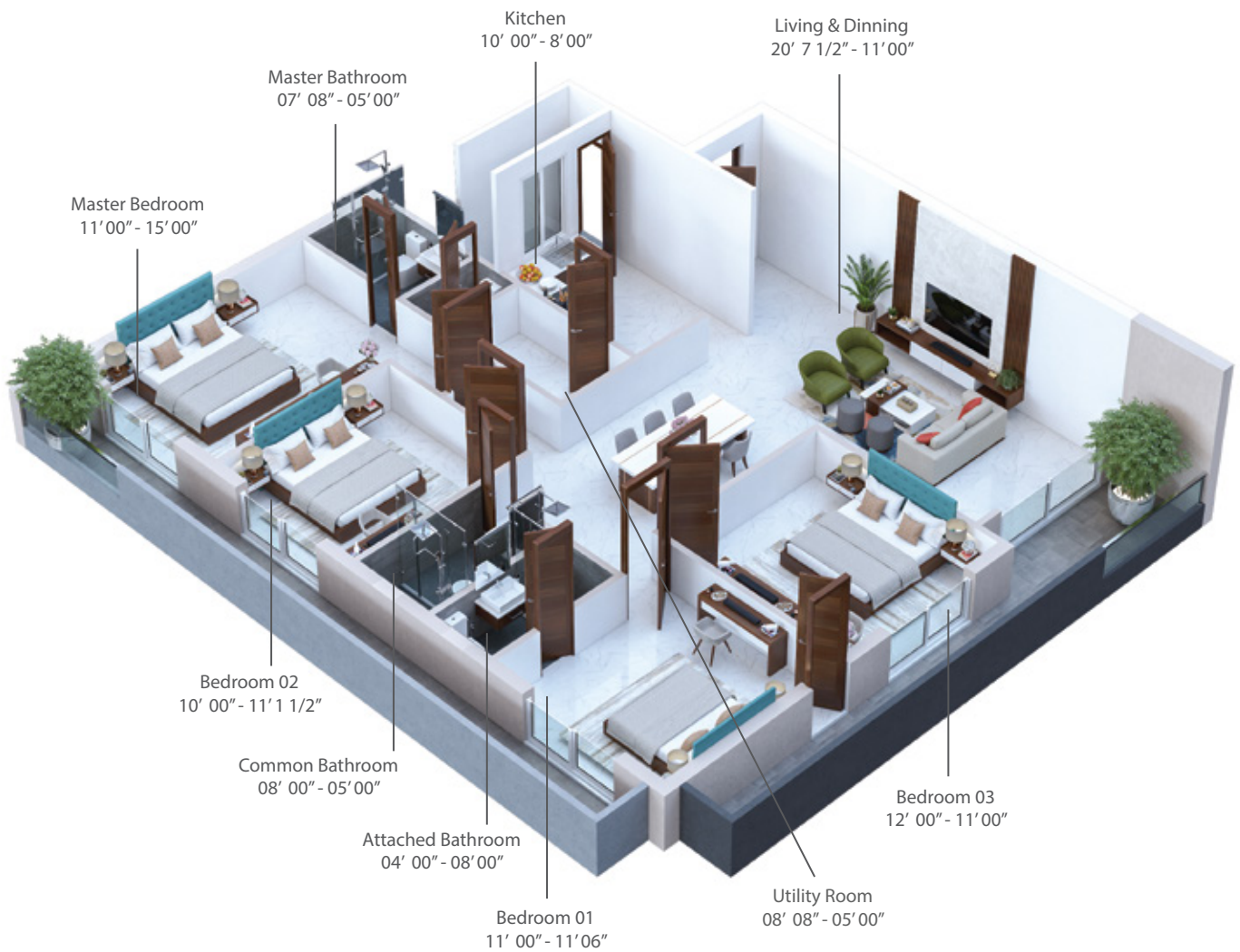
## UNIT A

1,375 Sq.Ft

### 3 BEDROOM

- 1 Master Bedroom with an Attached Bathroom
- 2 Bedroom with 1 Common Bathroom
- Living
- Dining & Kitchen with Pantry



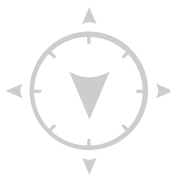


## UNIT B

1,700 Sq.Ft

### 4 BEDROOM

- 1 Master Bedroom with an Attached Bathroom
- 1 Bedroom with an Attached Bathroom
- 2 Bedroom with 1 Common Bathroom
- Living & Dining
- Kitchen with Pantry
- Utility Room with Toilet



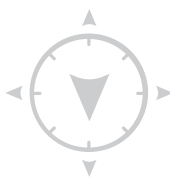


## UNIT C

1,250 Sq.Ft

### 3 BEDROOM

- 1 Master Bedroom with an Attached Bathroom
- 2 Bedroom with 1 Common Bathroom
- Living & Dining
- Kitchen with Pantry



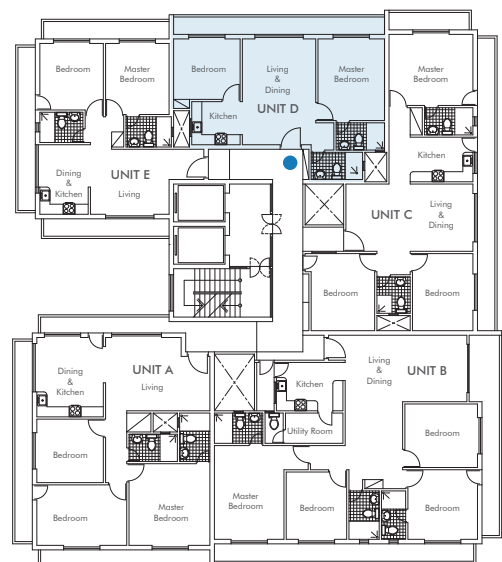
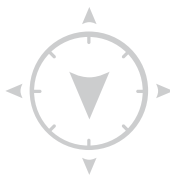


## UNIT D

830 Sq.Ft

### 2 BEDROOM

- 1 Master Bedroom with an Attached Bathroom
- 1 Bedroom with 1 Common Bathroom
- Living & Dining
- Kitchen with Pantry



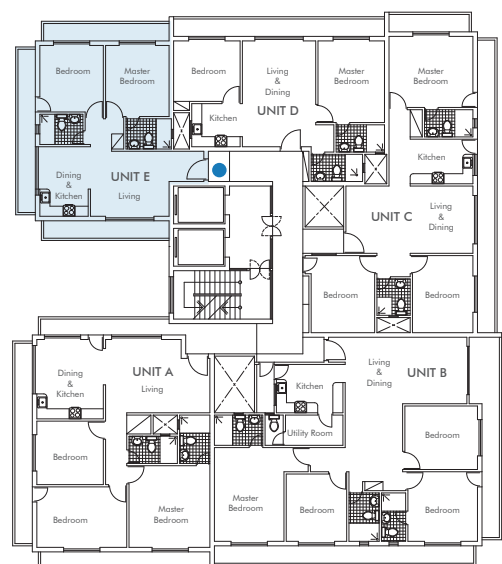
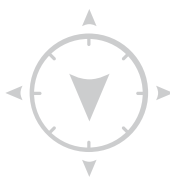


## UNIT E

950 Sq.Ft

### 2 BEDROOM

- 1 Master Bedroom with an Attached Bathroom
- 1 Bedroom with 1 Common Bathroom
- Living
- Kitchen with Pantry & Dining





## Sleep Sweet in Luxury

Bedrooms built for sweet dreams on cloud nine with your best choice cozy comfy bedroom furniture.





ON CLOUD **NINE**

## Plunge Into Infinity

The sky pool on the roof-top offers you the thrilling experience of ultimate relaxation and pleasure; refreshing moments that ease your hectic lifestyle.





## Living & Dining

An urban styled, modern living and dining room made elegantly spacious.





## Designer Bathroom

Equipped with the finest selection of designer bathroom utilities, your personal time is always refreshing and convenient.



## Every Home Chef's Delight

A kitchen so spacious and cozy, equipped with in built cupboards, stylishly designed for convenience and practicality.



**ON CLOUD NINE**

## Power Up

An exclusive, well equipped gym designed to keep your lifestyle active and fit





ON CLOUD **NINE**



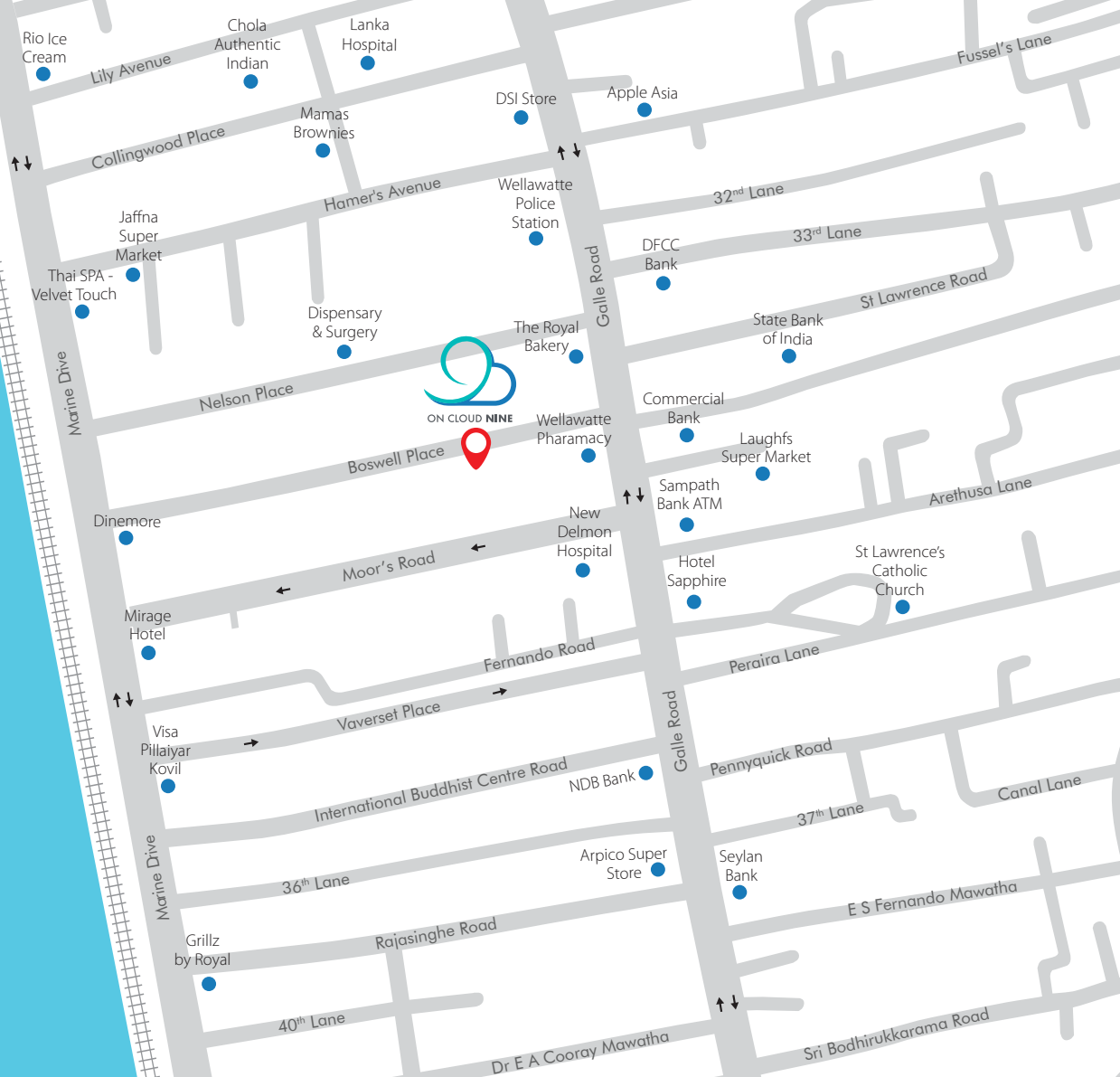


## Relax for Peace of Mind

Enjoy the roof top terrace for a simple quiet time of solitude and privacy.

## Location Info

9, Boswell Place,  
Colombo 06, Sri Lanka.



### Banks

- Commercial Bank
- LOLC Finance
- NDB
- State Bank of India
- DFCC Bank
- HNB
- Bank of Ceylon
- Peoples Bank
- Seylan Bank
- NSB
- HSBC
- Standard Chartered Bank
- Sampath Bank
- Nation Trust Bank
- Union Bank
- Amana Bank

### Entertainment

- Savoy 3D Cinema
- Savoy Premiere (Roxy)
- Cooray Park
- Children Park
- Shalika Grounds

### Education

- BCAS City Campus
- Methodist Memorial Montessori
- Ramanathan Hindu Ladies College
- St. Lawrence's Convent
- IDM Nations Campus International
- Informatics Institute of Technology
- Holy Family Convent
- St. Peter's College
- Shakthi Institute
- Muslim Ladies College
- Hindu College
- ICBT Campus
- Visakha Vidyalyaya
- Royal Institute of Colombo
- Isipathana College
- Elizabeth Moir

### Salons

- Samudrika Makeup Studio
- Priyaashanker Salon
- Brintha Herbal Beauty
- Salon Shaila
- Anusha Herbal Beauty Care

### Hospitals

- New Delmon Hospital
- Royal Hospital
- Help Age Eye Hospital
- The One Rehab & Healthcare
- Medi House
- Kalubowila Hospital
- Lanka Hospital
- Asiri Hospital
- Durdans Hospital

### Hotels & Restaurants

- Dinemore
- Mirage Hotel
- Hotel Sapphire
- Omega Regency
- GHS Hotel
- Global Towers Hotel
- Fair View Hotel
- Marine Grill
- Chana's
- Chola Authentic Indian
- Kandoori
- KFC

### Places of worship

- St. Lawrence Church
- Methodist Church
- Jumma Masjid
- Masjidur Rahman
- Sri Ishwaryaluxmi Kovil
- Sri Anjaneyar Kovil

### Shopping

- Laugh Super Market
- Cargills Food City
- Arpico Super Store
- Wellwellawatte Market
- Supun Super Mart
- Vasantham Foods
- Little Asia
- Nolimit
- Kamsins
- Jeyachandran
- London Stores
- Joy Glorious
- Fashion Bug
- The Brands Warehouse
- Studio Hameedia





# SPECIFICATIONS ON CLOUD NINE

## BEDROOMS

---

- **Floor:** Imported homogenous porcelain tiles
- **Wall:** Plaster skim coat with emulsion paint from CIC or equivalent
- **Ceiling:** Plaster skim coat with paint finish
- Split type air conditioner in Master Bedroom and provision for AC other bedrooms
- TV & telephone points in Master Bedroom
- Attached bathroom for Master Bedroom

## LIVING & DINNING

---

- **Wall:** Plaster skim coat with emulsion paint from CIC or equivalent
- **Floor:** Imported homogenous porcelain tiles
- **Ceiling:** Plaster skim coat with paint finish
- Provision for air conditioning
- TV & telephone points
- Attached balcony

## KITCHEN

---

- **Fittings:** Pantry cupboards top & bottom stainless-steel sink
- **Floor:** Imported homogenous porcelain tiles
- **Wall:** Plaster skim coat with emulsion paint from CIC or equivalent.
- **Ceiling:** Plaster skim coat with paint finish

## DOOR

---

- **Main entrance/ service entrance:** Solid timber doors
- **Internal:** Solid timber doors
- **Balcony:** Sliding doors of a reputed proprietary system with powder coated aluminum frames and glazing

## General

---

- **Foundation:** Pile foundation
- **Superstructure:** Reinforced concrete grid superstructure
- **External Walls:** Reinforced concrete and brick wall with a four-coat paint system from CIC or equivalent
- **Internal Walls:** Reinforced concrete and brick wall

## Balconies

---

- **Floor:** Non-slip porcelain tiles

## BATHROOMS

---

- **Floor:** Non-slip porcelain tiles
- **Wall:** Porcelain tiles up to ceiling level
- **Fittings & fixtures:** Reputed brand fitting, fixtures and accessories or equivalent
- **Vanity:** Granite vanity top with mirror
- Hot water supply from electric geyser for master bedroom
- Naturally ventilated

## WINDOWS

---

- Reputed proprietary system with powder coated aluminum frames

## ELEVATORS

---

- 02 Passenger Lift with 11 persons capacity

## PARKING

---

- Four car park levels accessible by ramp
- 01 Parking slot for each apartment
- Handicapped car parking facility

## STAND-BY POWER

---

- Backup generator for common area lighting, elevators, water and fire pumps

## SECURITY

---

- Security kiosk with intercom connectivity to each apartment and common areas
- CCTV surveillance for certain common areas

## WATER SUPPLY

---

- Supply from mains with individual metering
- Concealed plumbing with premium quality pipes, pumps, and fittings
- Sump and overhead tanks

## COMMON FEATURES

---

- A separate entrance lobby to the residences
- Letter box for each apartment
- Condominium Management office
- Drivers rest room and toilet
- Refrigerated wet garbage collection room
- Lightning Protection & Earthing system

## ELECTRICITY SUPPLY & INSTALLATION

---

- National grid electricity supply
- 30A/3 or 30A/1 Phase power supply with individual metering for typical apartments
- Concealed electrical copper wiring with circuit breakers
- Branded premium quality modular electric switches and plug socket from a reputed maker

## FIRE DETECTION AND PROTECTION SYSTEM

---

- Early warning Addressable Fire Detection System and Fire Protection System with Wet Riser System and Sprinkler System as per Fire Authority guidelines
- Emergency lamps in fire staircase at every floor









[edencity.lk](http://edencity.lk)

#### Location

9, Boswell Place,  
Colombo 06, Sri Lanka.

#### Contact

M : +94 77 722 2494

E : [info@edencity.lk](mailto:info@edencity.lk)

**Disclaimer :** This brochure is meant only for promotional purposes and general information purposes. The contents / pictures / images / renderings / maps (collectively referred to as "promotional materials") are purely indicative in nature and are artist's conception and shall not be considered as our offer / promise / commitment of any nature in respect of the project. All brands stated, if any, are subject to the final decision of the project architects. The Developer is in the process of complying with the various compliances under relevant authorities. You / Viewers are requested to contact our Sales Team to understand the current details regarding the nature of the project prior to making a decision to book the apartment/s in the project. Any purchase of this development shall be governed by the terms of conditions of a formal sale and purchase agreement entered into between the parties, and no detail mentioned in this printed material shall in any way govern such transaction.